



MONTHLY MEMBERSHIP PROGRESS REPORT

District 110AZ

Results as of: 1/31/2016

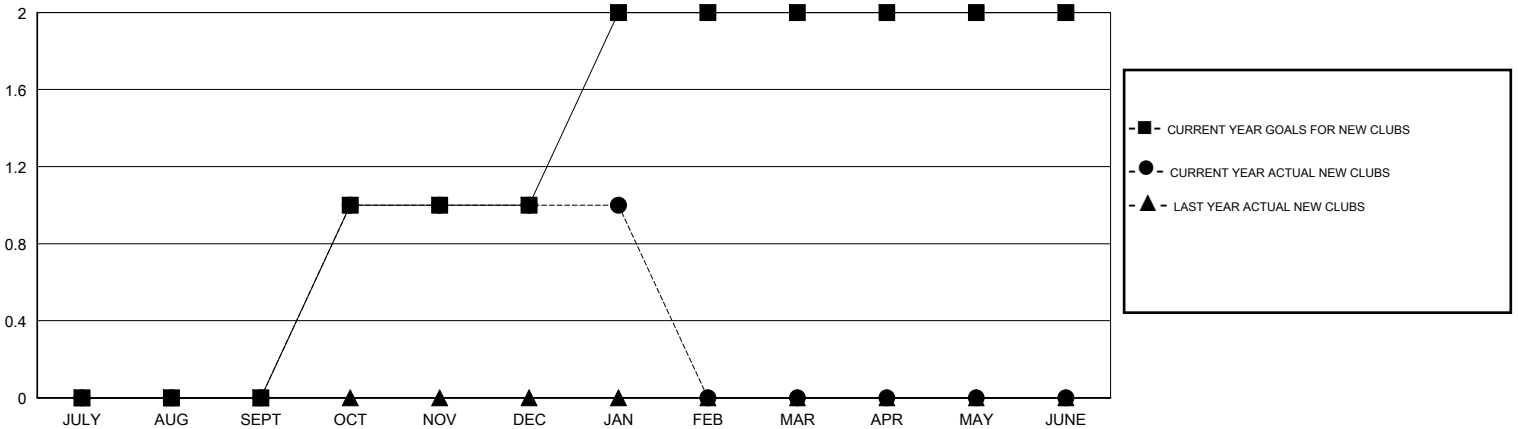
GMT: Ton Soeters

LOCATION NETHERLANDS

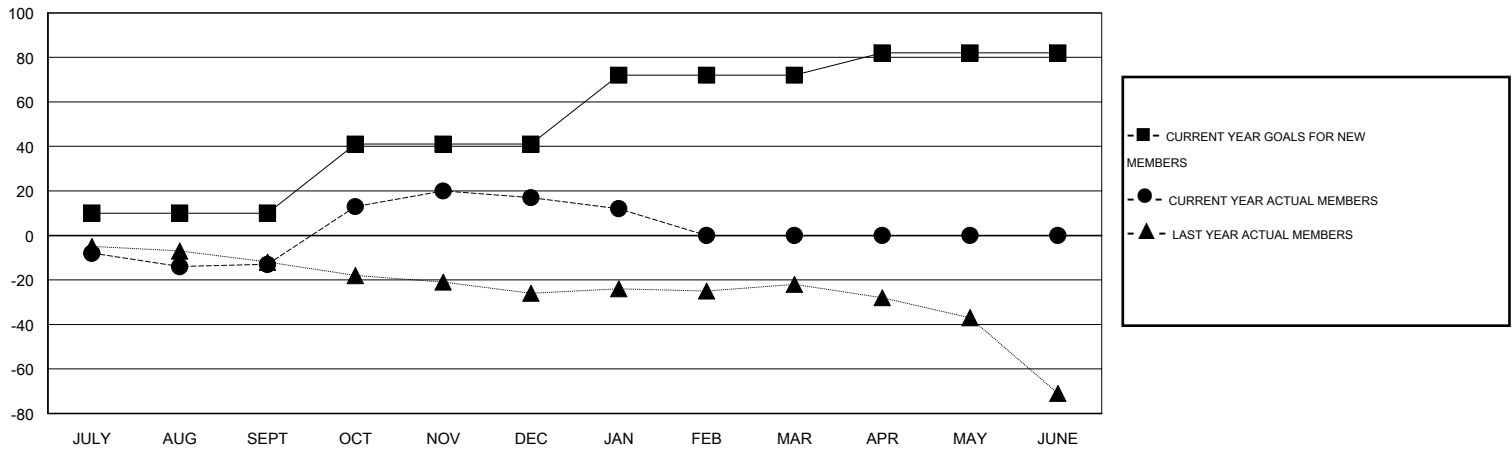
GMT CA 4

| Clubs | | | | | Members | | | | |
|-----------------------|---------------|-----------|---------------|---------------|-----------------------|-----------------|-------------------------------|-----------------|---------------|
| RESULTS FOR 2015-2016 | | | | | RESULTS FOR 2015-2016 | | | | |
| QUARTER | NEW CLUB GOAL | NEW CLUBS | DROPPED CLUBS | NET GAIN/LOSS | QUARTER | NEW MEMBER GOAL | CHARTER AND NEW MEMBERS ADDED | DROPPED MEMBERS | NET GAIN/LOSS |
| JULY/AUG/SEPT | 0 | 0 | 0 | 0 | JULY/AUG/SEPT | 10 | 6 | 19 | -13 |
| OCT/NOV/DEC | 1 | 1 | 0 | 1 | OCT/NOV/DEC | 31 | 43 | 13 | 30 |
| JAN/FEB/MAR | 1 | 0 | 0 | 0 | JAN/FEB/MAR | 31 | 0 | 5 | -5 |
| APR/MAY/JUNE | 0 | 0 | 0 | 0 | APR/MAY/JUNE | 10 | 0 | 0 | 0 |

GOALS AND ACTUAL NEW CLUBS CUMULATIVE



GOALS AND ACTUAL MEMBERS CUMULATIVE



| | | | |
|------------------------|---|----------------------------|---------------------|
| DROPPED CLUBS: 0 | 22 CLUBS OF 73 ADDED 1 OR MORE NEW MEMBERS | <u>GENDER DISTRIBUTION</u> | |
| | | MALE | 1,694 (82.63%) |
| <u>DROPPED MEMBERS</u> | CLICK HERE FOR HEALTH ASSESSMENT DATA | FEMALE | 356 (17.37%) |
| DECEASED | | 8 | FAMILY UNIT MEMBERS |
| CLUB CANCELLED | 0 | HEAD OF HOUSEHOLD | 0 |
| OTHER | 29 | NON-HEAD OF HOUSEHOLD | 0 |
| TOTAL | 37 | | |